

MICRO FOCUS EUROSMART™

“I’m very happy that we made the decision to go with EuroSmart. Other products simply couldn’t provide the same level of quality or hit rates in test runs.”

Thomas Klammer
Euro/Systems Analyst
Quelle Linz.

OVERVIEW

Micro Focus EuroSmart™ is designed for use by central analysis teams estimating, assessing, managing and verifying euro changeover programs. It allows the analysts to manage the complexity, justify the appropriate budget, assure the quality and accelerate time to market of installed system changes to make use of the euro.

EuroSmart presents a comprehensive set of sophisticated analysis tools that are used to accurately identify all potential impacts then isolate and categorize all the necessary data, code and screen modifications. In particular, EuroSmart provides detailed reports on where the data that must be converted resides within existing data stores and which data structures will require modifications to their format. EuroSmart also enables IT to discover all the monetary constants and thresholds embedded within the IT systems so the business analysts can decide how these should be adjusted before the new euro-based data stores are used in production. Specifically targeted at helping organizations solve the euro challenge, EuroSmart can deliver a comprehensive and high-quality euro changeover well in advance of the competition.

The impact of the euro varies immensely depending on whether a country has opted to replace their national currency unit (NCU) with euro or not. In countries that have decided to adopt the euro, organizations are actively updating their business systems to utilize the euro as their base currency. Some of these organizations will already have completed much of the effort, but are looking for an effective IV&V methodology to prove the validity of the work undertaken. In countries that have not yet adopted the euro, organizations are simply trying to ascertain the effort and costs involved if the euro were to be adopted.

When business systems are updated to utilize the euro as their base currency, it is not uncommon for the data migration element of the project to account for 50-80% of the overall project effort. However, many organizations have unique challenges in tackling this migration because they can’t determine which elements within each data store contain monetary amounts that must be converted to euro and which contain other numeric data that must not be converted. Very few organizations maintain the detailed level of documentation needed to address this challenge but without it an effective data migration is impossible. Secondly, without this level of detailed understanding it’s also impossible to understand which data structures will actually require format changes before any data migration can be attempted.

By focusing on the uniqueness and complexity of the issues presented by a euro changeover program, EuroSmart allows your organization to swiftly, accurately and completely prepare itself to meet its new business requirements. Furthermore, by being flexible to the unique euro requirements each organization has, EuroSmart can be applied equally well in situations ranging from a targeted euro IV&V exercise through to full-scale inventory-wide euro changeover processes.

HIGHLIGHTS

Estimate Cost and Effort Accurately

Accurately estimating the cost of a euro changeover project is vital in justifying appropriate resources and budget. Using Micro Focus EuroSmart, a small central team can develop an automated impact analysis and categorization process, define the effort and cost required for every category of change and generate accurate effort and cost estimation reports for all applications in the IT inventory. These estimations can then be presented and rationalized to executive management.

Decrease Risk Through Managing Complexity

Euro project experience has shown that a high quality detailed impact assessment phase is required or the implementation, data migration and testing phases do not progress to plan, thereby increasing risk of failure. Using EuroSmart, the central analysis team refine the automated analysis and categorization process to ensure all data conversion requirements are captured, so all data structure modifications and related code and screen impacts can be identified up front.

Accelerate Time-to-Market

Thanks to the targeted nature of its tools, EuroSmart accelerates estimation and detailed analysis activities by a factor of five. By providing a method for estimating accurately, automating analysis tasks and making it a repeatable process, accurate and complete inventory cost estimation and delivery on key enterprise changes is achievable in a fraction of the time first perceived.

Ensure Quality

The increased quality of the detailed impact assessment ensures that the implementation, data migration and test phases are faster, and there is significantly less rework due to errors detected in user acceptance testing. Additionally, any IV&V program will yield the necessary results more quickly. Overall, delivery is achieved significantly earlier than when using traditional tools and methodologies.

“We reduced our required analysis effort by 80%, from an estimated ten man-years down to two man-years.”

Michael Reisiger, Alldata

FEATURES

Visualize Enterprise Systems

In advance of any mass change analysis, it is vital to fully understand the structure and nature of the systems to be analyzed. EuroSmart provides navigational and automatic diagramming tools to give system and component-level graphical views, which allows effective system documentation to be generated that reflects the actual workings of even the most complex system.

Comprehensively Assess the Entire Inventory

Built into the EuroSmart architecture is an in-depth understanding of installed enterprise applications, which allows you to make a thorough and complete assessment of potential euro changeover impacts. For example:

- Locate potential monetary fields, including "incomplete fields," by examining the actual format of all data items. This includes data items with ambiguous or non-monetary related names
- Find constants/thresholds important to existing monetary transactions
- Isolate currency symbols and currency indicator literals in the application
- Identify fields that are not monetary fields by looking at their actual usage
- Identify which input and output screens handle money
- Search files and reports for records holding monetary values
- Indicate where databases may be impacted
- Use intelligent search defaults based on your country settings
- Assist with all data-migration requirements presented by the euro challenge

Categorize Based on your Requirements

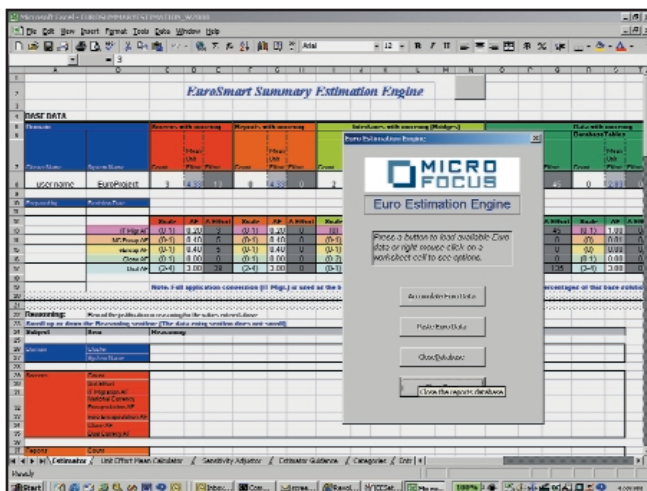
Because there are many reasons why a data item might be identified as monetary-related, it is essential to categorize the points of interest accurately. This categorization is key in establishing initial program cost assessments, developing a complete and realistic change program plan and facilitating a well-managed code modification process. EuroSmart provides facilities to group Points of Interest according to categories defined by the analyst.

Establish your Repeatable Analysis Process

An effective and complete euro assessment will require iterations of investigation, analysis and reporting, refining understanding and detail at each step. To facilitate this, any of EuroSmart's standard or tailored analysis tools, along with the operations performed on the data sets, can be captured as a new user specific "composite tool" as simply as right-clicking and naming the process. Additionally, the results of each tool can feed into another, or be manipulated using set operations (union, intersect, subtract), enabling you to quickly focus on the items of interest and build the analysis tools you need. This extraordinary functionality allows you to automate and record your "best practice" processes and is essential in helping you develop a structured and repeatable analysis process specific to your application inventory.

Estimate with Accuracy

Accurately estimating the cost of a euro changeover project is vital in justifying appropriate resources and budget. Using the EuroSmart estimation engine, you can define the effort and cost for every category of change, and generate accurate effort and cost estimation reports for all applications in the IT inventory. Summary or detailed level estimates, for both cost and time, can be automatically and accurately generated using results from initial analysis steps, thereby assisting greatly in determining appropriate resource and budget for the euro changeover project.



Using the EuroSmart estimation engine, you can define the effort and cost for every category of change, and generate accurate effort and cost estimation reports for all applications in the IT inventory.

Refine and Organize Further Analysis Work

Using the EuroSmart worksheet, your analysis results are stored centrally and access to this information is provided with a sophisticated graphical tool. This allows a central group to organize and refine initial automated results as more detail becomes available. Adding annotations for each point of interest and adding or changing categories is also possible, allowing logical units of work to be grouped together. Levels of worksheet can be established to provide individual or group-level worksheets, providing effective task integrity and a controlled approach. All worksheets are also automatically time stamped with any updates, thus providing an effective audit trail of all activities undertaken.

Report Effectively

To ensure the whole team is made aware of key decision points in the project, Micro Focus EuroSmart provides facilities for producing fully customizable Microsoft Access reports that enable you to meet all your euro program reporting and auditing requirements.

Prepare for Implementation

Your euro assessment program could well result in a large number of required changes to your installed systems being defined. EuroSmart assists in taking the details from your investigations forward to implementation. From the EuroSmart reports database, you can now export record structure definitions, which can be imported into the Sopra™ EuroConverter Studio or other euro conversion tools. Monetary items that appear in a record buffer will appear in the Sopra structure definitions with their offsets and data types.

Implement a Repeatable Euro Process

The key to success in a euro changeover program is to create and adhere to a well-defined repeatable process. As well as the facilities provided by EuroSmart itself, the Micro Focus Euro Analysis process provides the effective, tailorable and repeatable framework, from initial inventory analysis to full implementation, to accelerate completion time and reduce risk of failure.

Exploiting the Power of Micro Focus Revolve® Enterprise Edition

EuroSmart incorporates the powerful inventory and application analysis features provided by Micro Focus Revolve Enterprise Edition. Enterprise Edition helps central analysis teams manage the complexity of all aspects of any inventory-wide change programs. With its rich functionality, repeatable process and support for group working, Revolve Enterprise Edition is the heart of EuroSmart. For more information on Revolve Enterprise Edition, please request a product data sheet.

TECHNICAL SPECIFICATIONS

Language Support

IBM System 390 Environment

- COBOL 390
- OS/VS COBOL
- System 390 Assembler (1)
- CICS
- DB2
- VS COBOL II
- PL/I (1 & 2)
- MVS JCL
- IMS DB/DC
- Other languages and 4GL's (3)

Windows NT and UNIX Environment

- Micro Focus COBOL
- ANSI 85 COBOL
- ANSI SQL
- ANSI 74 COBOL
- Micro Focus Screen Systems (4)
- Other languages and 4GL's (3)

Other Environments

- Unisys UCOB / Unisys ACOB (1 & 2)
- Other proprietary COBOL dialect support (5)

Recommended Configuration

- Minimum processor: Pentium II 300MHz or equivalent
- 256MB RAM
- 6GB free hard disk space, depending on inventory size
- Windows 2000 or NT 4.0 with Service Pack 6a, or higher
- Microsoft Access 97 or higher (for reporting facility)

1 This support provided using a specific add-on language parser.

2 This support is made available to Strategic Customers only. Contact your sales representative for further details.

3 Any other languages (for example: C, C++, Java, Visual Basic or REXX) or 4GL's (MetaCOBOL, CA-Ideal, CA-Telon, Delta, Easytrieve and APS) are supported by a generic text browser rather than a language-specific or add-on parser.

4 This support is provided for the calls made to Micro Focus Screen Systems, rather than the screens themselves.

5 Support for dialects of COBOL from other environments (for example: ICL VME, Siemens BS2000, IBM AS/400, Wang) can be provided using Field Developed Solutions for them in conjunction with the base ANSI COBOL support. Contact your sales representative for further details.

Micro Focus is the industry leader in COBOL development solutions ranging from traditional maintenance and program understanding to business rule mining, Web-enablement and user-interface transformation. Over 70,000 licensed users at more than 7,000 sites around the world use Micro Focus' unsurpassed breadth of platform support, performance and scalability. Micro Focus offers the most comprehensive suite of development and integration environments to help customers succeed in taking full advantage of the power of their legacy systems. Founded in 1976, Micro Focus is a global company that employs more than 450 people worldwide with principal offices in the United Kingdom and North America. For more information, visit www.microfocus.com

877 772 4450
microfocus.com

Micro Focus Worldwide

Australia+61 2 9904 6111
Belgium+32 15 30 81 11
Canada
 Ontario905 824 7397
 Quebec800 280 9487
France+33 (0) 170 929 494
Germany
 Dortmund+49 231 75 85 0
 Munich+49 89 96 27 10
Ireland+353 1 469 3121
Italy
 Milan+39 02 6943401
 Rome+39 06 5153931
Japan+81 3 5401 9670
Netherlands+31 (0) 23 5689 138
Norway+47 22 91 07 20
Sweden+46 8 545 13 390
United Kingdom+44 (0) 1635 32646
United States(+1) 877 772 4450
Other Countries+44 (0) 1635 32646

