

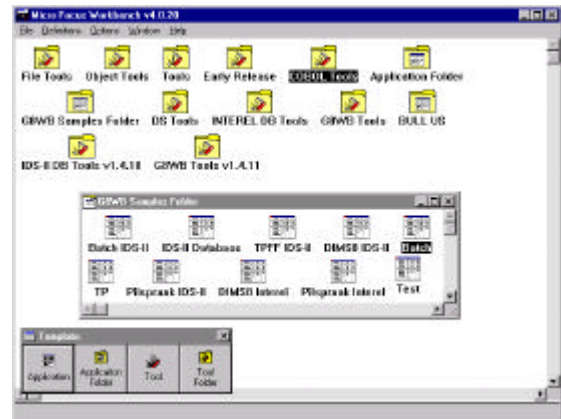
GCOS-8 COBOL Workbench (G8WB) introduces a full feature and inexpensive *GCOS 8 environment on your desktop workstation*. Your professional programmers can develop and maintain full scale GCOS 8 application systems on a dedicated workstation, completely independent of the mainframe. *Substantial productivity*

*gains* can be achieved through a responsive environment, richer in functionality and features than anything available on the mainframe.

Besides improving production, quality and general work satisfaction, the workbench environment will *decrease the workload on the mainframe* considerably.

## State-of-the-art

G8WB is based on Micro Focus Workbench and provides a state-of-the-art environment, where mainframe application development, maintenance and testing becomes efficient and fun. You have seen this with C++, Visual Basic, Java and others environments, well now PC COBOL and Mainframe COBOL is at par. Whether you are engaging in a Year 2000 project, new application development, want to improve productivity and quality, or simply want to bring your programmers up-to-date, G8WB is a no-nonsense investment.



## COBOL Support

G8WB support *COBOL-74, COBOL-85 and SQL* application programs, and you always work with the original source whether editing, compiling or testing. G8WB includes tools to assist you in transferring application components to and from GCOS 8 mainframe. Unlike GCOS 8, G8WB use dynamic linking and any module or program is ready for testing instantly, without linking. G8WB fully utilize virtual memory and will support any size GCOS 8 application.

## TP Support

G8WB support *DMIV-TP* and *TP8* with various Forms software and native communication with *VIP77XX, VIP78XX, DKU71XX* and *IBM327X*. Several TP specific testing aids have been included, to assist you in catching most common TP errors. Unlike GCOS 8, each programmer will be able to work with their own TP Monitor, and quickly start/stop it as required during testing.

## Database Support

G8WB support *IDS-II* and *INTEREL/RFM* database systems, and includes tools to assist you with setting up schema, subschema and models, from original DDLsource syntax, offloading existing test databases from GCOS 8 and maintain local databases. Unlike GCOS 8, each programmer will be able to work with their own databases, and thus work independent of other developers.

## Forms Support

G8WB support *TPFF, TSM8, DIMS8, FORMAT, Arrowtalk, SOLD and SOLD+* Forms software. Forms emulation utilize standard terminal emulators, thus the end-user appearance will be exactly like GCOS 8 target environment. A universal screen painter (WUSP) provides a consistent, user-friendly and efficient environment for forms development and maintenance, and includes tools to assist you in importing and exporting forms from the GCOS 8 environment.

## Batch Support

G8WB require no JCL and program testing is very simple. A simple mapping technique, may be used to obtain similar functionality to \$PRMFL, when required. For batch stream testing you are able to build command files, with similar functionality as you have on GCOS 8.

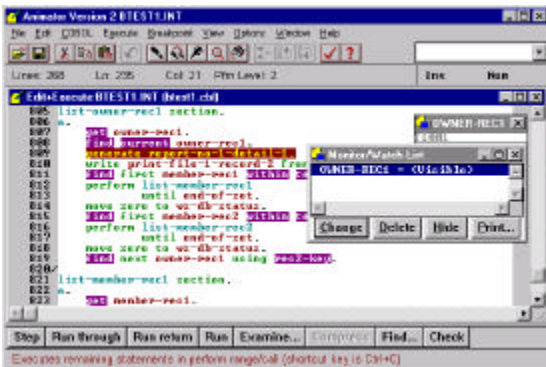
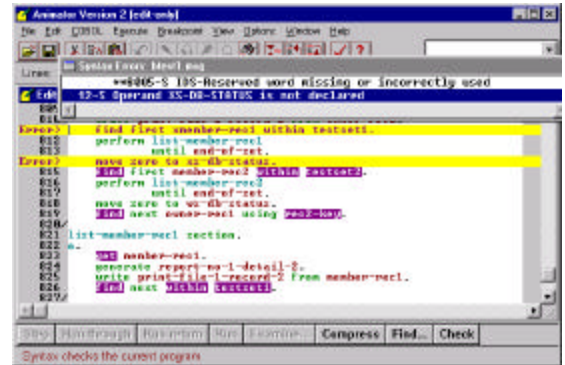
---

**GCOS-8 COBOL Workbench is the strategic choice for state-of-the-art mainframe application development**

---

## Developing

The traditional Edit-Compile-Test cycle becomes very effective with G8WB. The Editor is COBOL oriented and makes program editing much easier. The integration with the compiler allows you to compile the program by clicking a button. When compile errors are detected, these are highlighted in the source and programmer may easily navigate between these and correct errors. Copy members (including subschema) may be opened with the click of a button during editing. Syntax is colorized to make reading of program easier.



## Testing

The single most powerful feature of G8WB is Visual Animation, which allow the programmer to view the original program source as it executes. COBOL Animator has many features to control execution (break-points, restart, etc.) and verify execution (query fields, monitor fields, query IDS-II currencies etc.). COBOL Animator also provides intelligence on how the program is being tested (coverage statistics), data item usage etc. During testing you may even execute COBOL/IDS-II statements on the fly, and edit the source as you go along. Live debugging instead of post mortem analysis is very effective, and fun too.

## Client Support

G8WB support standard terminal clients like Forms software and native communication, however, any client interface (application driver, interface to non-standard sessions etc.) may be implemented with the Open Client feature of G8WB.

Support for ESP8 and NATSTAR is currently being developed in cooperation with BULL and NAT Systems and will be released ultimo 1997. Support for WEB Browser is planned in cooperation with BULL.

## Tools Support

G8WB provides a natural interface to other workstation based software, such as: CASE tools, Editors, Project Management, Version Management etc.

G8WB may be used with products like PACBASE, JSP Workbench, INSTALL/1, FOUNDATION and NATSTAR, TURNKEY, PVCS, CONTINUUS, RCS and Source-Safe.

The Open Concept of G8WB allows you to implement and integrate own developed mainframe tools, such as: Data Dictionary, Preprocessor, Version Management.

G8WB contains full support for Y2K and has added features for Y2K testing.

## Open Toolkit

G8WB provides a number of Open Toolkits, which allows you to implement own developed User Procedures (TP), Forms software, Distributed Print software, GMAP modules, Client interfaces etc.

Own developed procedures/tools are easily developed with COBOL Workbench and the standard tools framework of G8WB, thus own developed features and functionality may be integrated with G8WB with the same look and feel.

## Environment

G8WB is available in both a 16-bit and 32-bit version and may be deployed in a networked PC workstation environment under DOS, Windows 3.x, 95, NT or OS/2. Minimum configuration: 486/Pentium, 8-16MB memory and 100MB disk. All LAN environments are supported.

G8WB includes both a PC and GCOS 8 mainframe environment, and may be extended to support IBM mainframe also.

For more information or an on-site evaluation, please contact B & C Solution or your local BULL office.

B & C Solution, Box 54, Ole Piisvej 4, DK-3100 Hornbaek, Denmark  
Tel. +45 49704790 Fax. +45 49704780 Email. bcs@bc-solution.dk Homepage. www.bc-solution.dk.